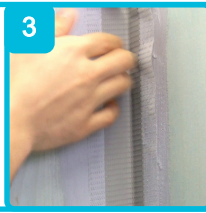
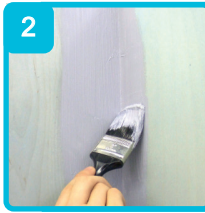


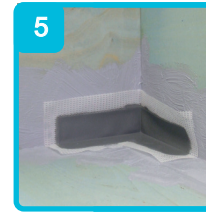
Application for OTL Wet Room Tanking System



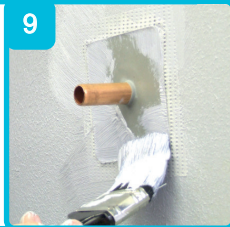
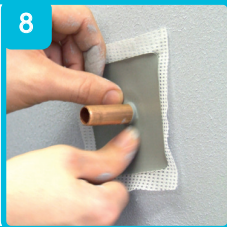
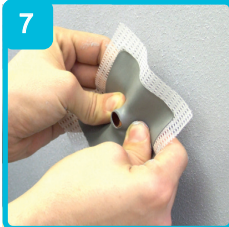
Applying OTL 022 Primer



Applying OTL 024 Tape



Applying OTL 028 (Internal Corner) or OTL 029 (External Corner)



Applying OTL 026 Pipe Sleeve

Installing OTL 027 Tanking Mat



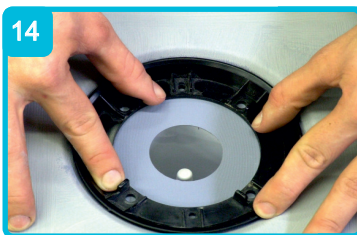
Undo the screws to the top of the cover plate and clamping ring



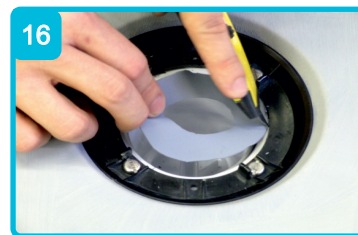
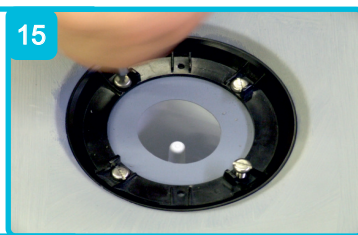
Place the tanking mat over the gully with the hole positioned centrally. Fold one side of the mat over and apply a coat of compound, bed down the mat and repeat to the other side



Brush out any creases and excess compound. Apply a coat of compound over the complete area. Leave to dry.



When the compound is dry place the clamping ring in position, push down and screw into position using the four screws.



With a knife cut away the excess matting inside the clamping ring



Insert the trap protector. Replace the coverplate on completion



Apply 2-3 coats of OTL 025 Tanking Compound



Fully Tanked Shower Cubicles



Unit 8/9 Youngs Industrial Estate
 Stanbridge Road
 Leighton Buzzard
 Bedfordshire
 LU7 4QB
 Tel: 01525 373202 Fax: 01525 373222
 email: info@onthelevel.co.uk
 web: www.onthelevel.co.uk