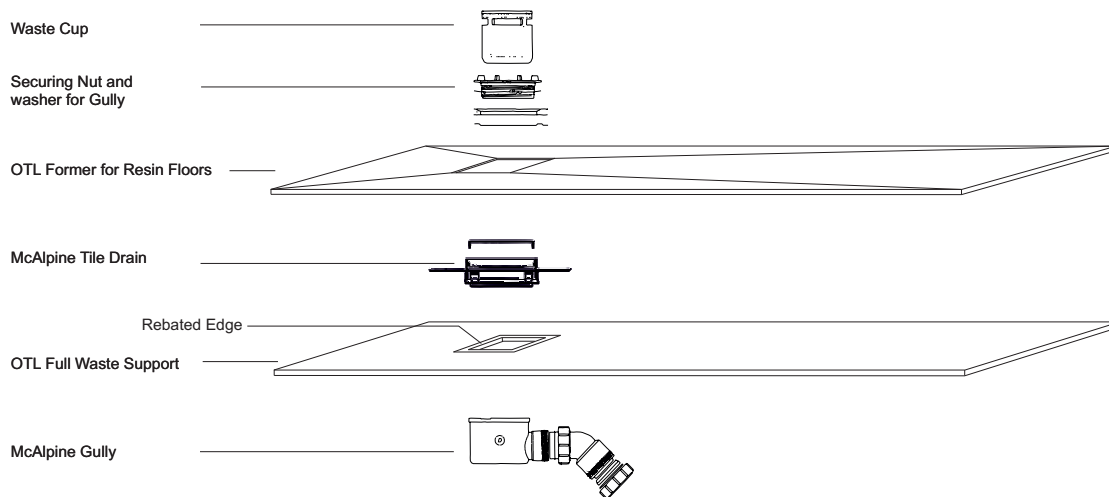


# Installation Instructions for Resin Floors



On The Level  
 Unit 8 Youngs Industrial Estate.  
 Stanbridge Road.  
 Leighton Buzzard.  
 Bedfordshire.  
 LU 7 4QB  
 TEL : 01525 373202  
 FAX : 01525 373222  
 www.onthelevel.co.uk  
 Email: sales@onthelevel.co.uk

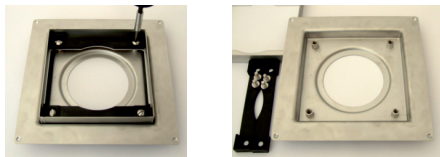


Ensure the prepared surface is clean and dry and free from all dust and debris before installing.

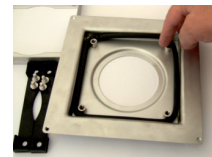
1. Position the McAlpine Gully and connect to waste pipe ensuring that the pipe is adequately supported. Test for leaks.
2. Ensuring the surface of the Sub Floor is clean and dry and free from all debris.  
 Secure the OTL Full Waste Support (**with the rebated edge facing upwards**) to the Sub Floor.

3. Fitting the temporary O ring (This must be fitted to stop any excess resin going into the Drain and is removed after completion of works)

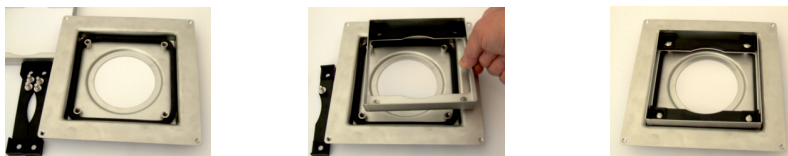
A. With the top removed unscrew the four screws securing the frame and plastic guides



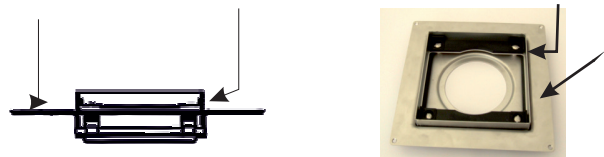
B. Insert the supplied OTL O ring



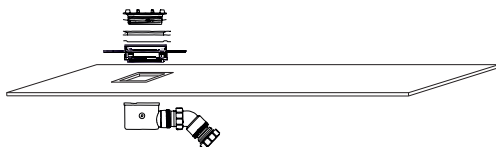
C. With the O ring inserted. Replace the frame and plastic guides, secure with the 4 screws



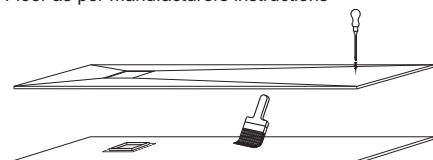
4. Apply Altro Primer G (for metal) to the outer edge of the frame and the top of the base to the McAlpine Tiled Drain



5. With the OTL Full Waste Support secured to the Sub Floor Install the gully to the drain as per manufacturers instruction and screw the McAlpine Tile Drain to the OTL Full Waste Support with the 4 screws provided.

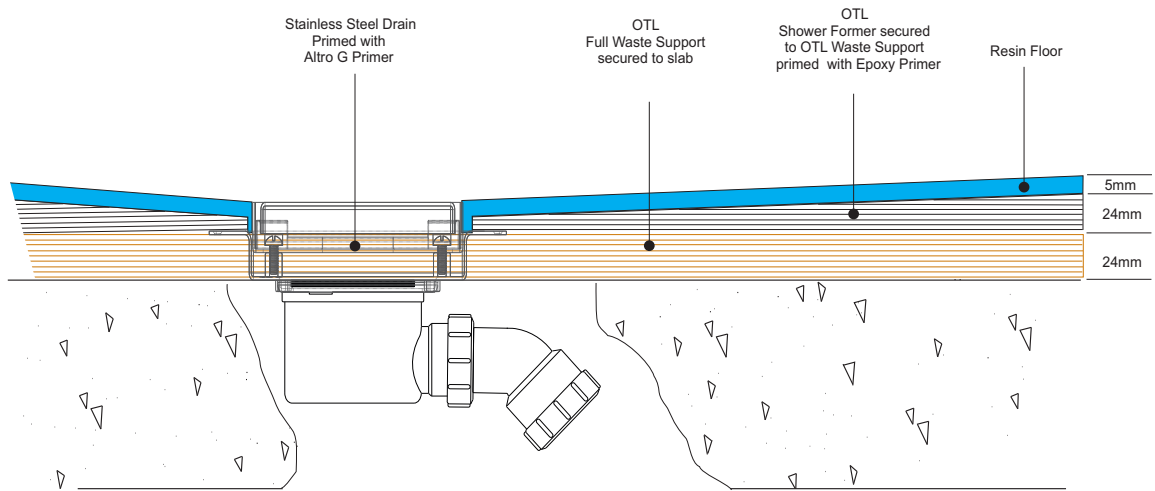
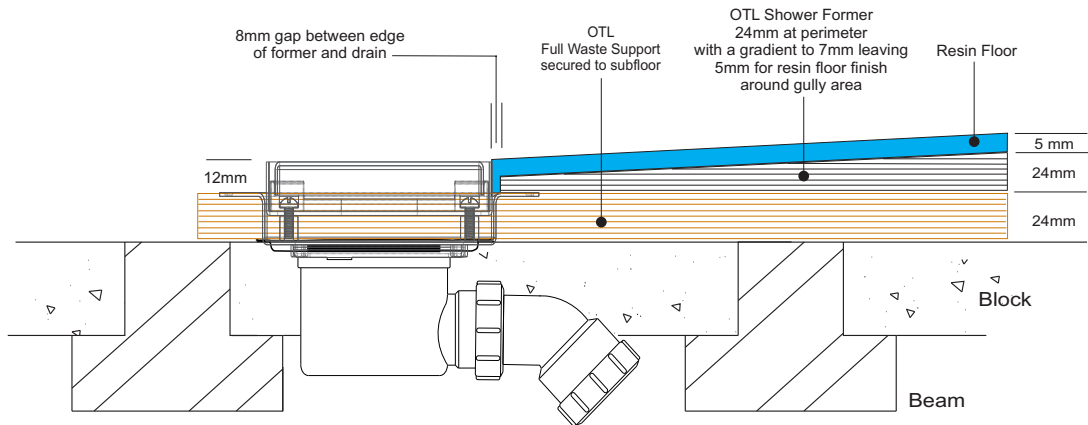


6. With the drain secured to the waste support apply a liberal coat of PVA adhesive to the complete area of the waste support. Position the OTL Former over the waste support, line up the former so there is an 8mm gap around the drain, secure the former to the waste support using countersunk wood screws, the head of the screws must be below the surface of the former and filled with P28 Epoxy Resin. Prime the complete area of the former with Altro EP Primer. Apply Resin Floor as per manufacturers instructions



7. When completed remove the Temporary O ring and insert the grating.

# Suggested : Altro Resin Floor Build Up



Not to Scale



On The Level Unit 8 Youngs Industrial Estate. Stanbridge Road. Leighton Buzzard. Bedfordshire. LU 7 4QB  
 TEL : 01525 373202 FAX : 01525 373222  
 www.onthelevel.co.uk. Email: sales@onthelevel.co.uk