

OTL Tanking System

Wet Room Solutions



Application Guidelines

There are several ways of constructing a wet room but there are some basic principles that must be observed, these are;

1. The floor can either be screeded or constructed from heavy duty wooden sheets such as plywood. But in all cases there must be a gradual slope towards an appropriate shower outlet. The structure must be solid, without flexing, any joints in the construction board must be butted together and well fitting.
2. The body of the shower outlet must be recessed or cast into the floor in such a way that the top of the flange is lower than the surrounding floor, all pipework from the shower outlet must run downwards into drains.
3. All brickwork or blockwork walls should be flush pointed and any damage should be made good prior to using the OTL Tanking System.
4. OTL Tanking System cannot be used directly over conventional narrow floorboards, such boards must be replaced or covered with a sheet material such as plywood. Hardboard is not suitable as it is not rigid enough to prevent transfer of movement from the original floor.

PRIMER

OTL Tanking System PRIMER can be used as a bonding agent on most absorbent surfaces including plasterboard, plywood, gypsum plasters MDF etc. The surface must be dry, solid, supportive, as well as free from oil, grease, dust and other separating layers.

Residual adhesives and paint as well as any loose plaster or masonry have to be removed before application. OTL Tanking PRIMER must be shaken or stirred thoroughly before use and is then evenly applied using a fur roller, paint brush or a suitable spray gun. When the primer is touch dry the subsequent coatings can be applied.

The temperature during application and drying period must be +5 C minimum and +25 C maximum. The drying period for OTL Tanking PRIMER depends on the temperature of the air and the building structure, the movement and humidity of the air and the absorbency of the substrate. When the temperature is 20 C and the relative air humidity 50% the approximate drying period is 2 hours.

The consumption rate of the OTL PRIMER depends on the absorbency and nature of the substrate. Normally the consumption rates range from 100 to 150 g/m². All tools may be cleaned with water immediately after use.

TAPES, SLEEVES and CORNERS

All wall to wall and wall to floor junctions as well as nail/ screw heads, must be reinforced with OTL Tanking TAPE. In all areas where the tape is needed first apply a generous stripe coat of OTL Tanking System COMPOUND overlapping the width of the tape by approx 1 cm each side.

Press the OTL Tanking TAPE and CORNERS into the still fresh COMPOUND, with a hand float, ensure the tape and corners are flat with no raised edges or creases. Any overlaps in the tape should face downwards and should be at least 5cm with a generous coating of COMPOUND in between. If not using OTL Tanking PRE-MADE CORNERS then at internal corners the tape must be cut from the bottom edge to the middle point and folded in on itself with compound between the overlapping pieces.

For external corners a second piece of tape must be cut this time from the top edge to the middle and placed diagonally over the corner overlapping the previous piece with wet compound in between. In this way the two pieces together cover the entire external corner, special attention must be paid to the very corner point where the two cuts meet, apply a generous coating of COMPOUND at this point. OTL Tanking System PIPE SLEEVES are pushed onto the hot and cold water pipes where they penetrate the wall, they are bedded in to fresh COMPOUND.

The SHOWER OUTLET SLEEVE is positioned centrally over the shower outlet. The sleeve dresses down into the body of the outlet. It is normally held in place with a clamping ring supplied with the shower outlet.

For application purposes it is best to remove the clamping ring while you position the sleeve and bed it in a generous layer of COMPOUND, taking care to leave an area of 50mm around the waste free of compound. Only after the sleeve is set in place and the compound fully dried should the clamping ring be replaced and tightened.

OTL Tanking System COMPOUND

Ensure the primed substrate is clean and dry and free from loose particles or other contaminants. The use of PRIMER is always recommended for absorbent surfaces such as plywood, plasterboard, plaster, screed or brickwork. Non-absorbent surfaces such as old tiles or plastic may need to be abraded before the application of the compound, in such cases a test application should always be made prior to proceeding.

OTL Tanking COMPOUND has to be stirred thoroughly before use. Application temperature should be between +5 C and +25 C maximum. Apply with a brush or fur roller in two or three generous coats. Do not "brush out" the compound to thin, but use a brush or roller as a way of spreading it in a thick layer. Each coat should be approx. 300-400g/sq.m.

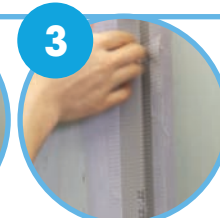
Each coat has to be completely dry before the next can be applied, this normally takes between 2 and 4 hours. OTL Tanking COMPOUND is also applied over the top of the previously applied tape, corners and sleeves, so as to give a seamless finish. COMPOUND will not fully cure for approx. two to three weeks, but can be tiled over using a waterproof tile adhesive after the final layer has dried for twenty four hours. OTL compound is a non-hazardous water based product it should not be subjected to long term "water standing" flood tests until it is fully cured, spray water testing may be carried out after a min 24 hours.

Further Advice. If anything is not clear or you need further advice please do not hesitate to call us.

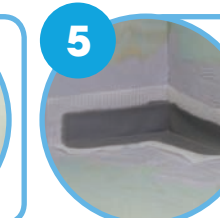
Application for OTL Tanking System



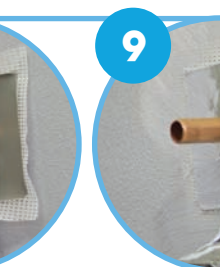
Applying OTL 022 Primer



Applying OTL 024 Tape



Applying OTL 028 (Internal Corner) or OTL 029 (External Corner)

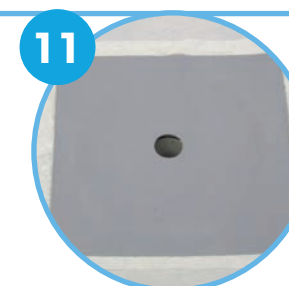


Apply OTL 026 Pipe Sleeve

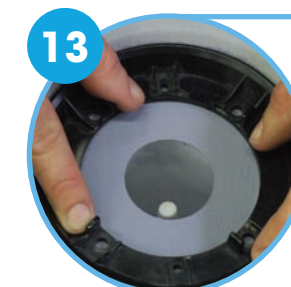
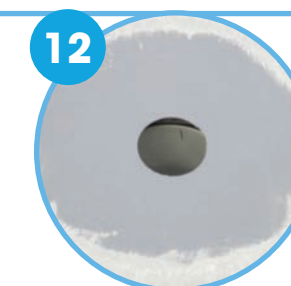
Installing OTL 027 Tanking Mat



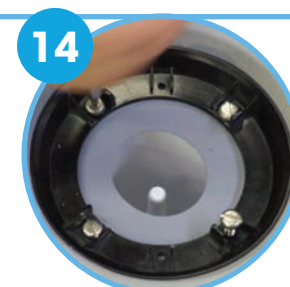
Undo the screws to the top of the trap and clamping ring



Brush on enough compound to cover the area of the Tanking Mat. Ensure the hole in the Tanking Mat is positioned centrally over the trap. Brush out any creases in the mat and leave to dry.



Push down the clamping ring and mark the position of the screw holes



Push the clamping ring in position and insert the screws



With a knife cut away the excess matting inside the clamping ring



Insert the trap protector. Replace with cover when the job is complete

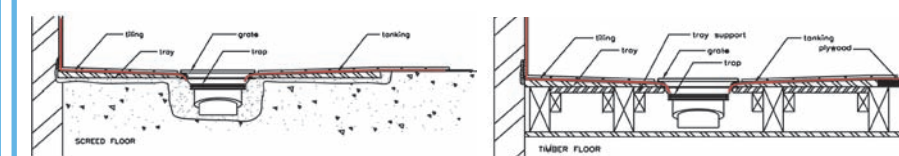


Overpaint with OTL 025 Compound



Apply 2/3 coats of OTL 025 Compound

Installation Application



OTL Tanking System OTL 021



The OTL Tanking System has been developed specifically to tackle the problem of leakages from tiled wet room areas. The OTL Tanking System can be applied to wood, plasterboard, MDF, concrete screed and most commonly used construction boards. Once applied the OTL Tanking System can resist normal movement in the room and will not become brittle with age. With the OTL System a fully tanked room can be achieved preventing damage to wall/floor substrates and leakages into the room below.

Contains all you need for a small to medium size wet room. (Covers approx 12 sq.m.)

OTL 021 Shower Kit Contains:

- 15 Kg Compound
- 3 Ltrs Primer
- 15 Linear Mtrs Tape
- 1 Large Tanking Mat
- 2 Small Sleeves



Primer 3 litres

OTL 022

A solvent free, highly absorbent primer for both porous and non porous surfaces. Applied at the rate of 150g per sq.m.



Tanking Tape

OTL 023

(100mm x 50 mtrs Roll)

Fabric reinforced, elastic sealing membrane for wall and floor junctions and other areas subject to stress. OTL sealing tape is based on a cure unplasticised acrylate dispersion with an undercoat fabric border along both sides.

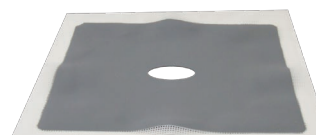
Also available in
OTL 024
(100mm x 15 mtrs Roll)



Compound 15kg (12sq.m)

OTL 025

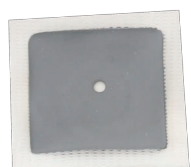
Solvent free, silicone compatible sealing membrane and adhesive supplied as a thick liquid applied in two generous layers at the rate of 300 - 400g/sq.m.



Large Tanking Mat

OTL 027

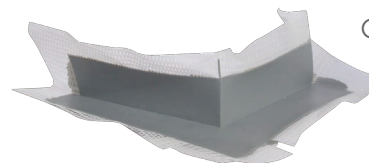
Large outlet sleeves are supplied for waste outlets.



Small Tanking Sleeves

OTL 026

Pre-made with elasticated holes for water outlets.



External Corner

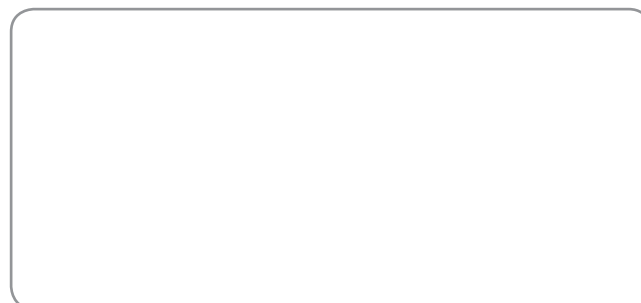
OTL 029



Internal Corner

OTL 028

Distributors



Unit 8 Youngs Industrial Estate, Stanbridge Road,
Leighton Buzzard, Bedfordshire LU7 4QB

Tel: 01525 373202 Fax: 01525 373222

Email: sales@onthelevel.co.uk

Web: www.onthelevel.co.uk